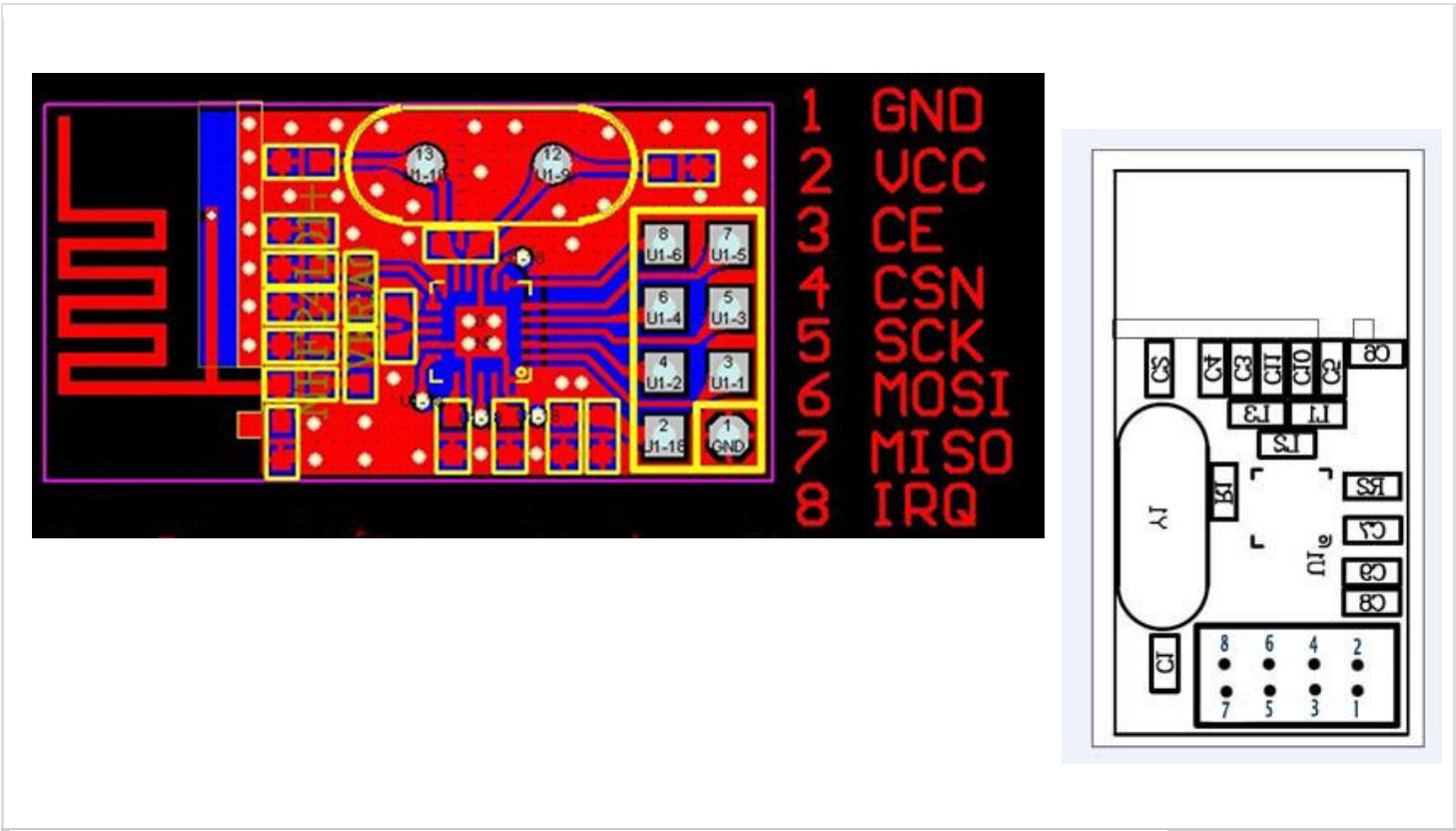


The nRF24L01 Modules here all use the same pinout as shown in the following diagram, which is **TOP VIEW (Left Image)** and **BOTTOM VIEW (Right Image)**



Here's details of the Pinout and connections to Arduino (updated):

Signal	RF Module	COLOR	Arduino pin for RF24 Library	Arduino pin for Mirf Library	MEGA2560 pin
GND	1	Brown	GND	GND	per library
VCC	2	Red	3.3V	3.3V	per library
CE	3	Orange	9	8	per library
CSN	4	Yellow	10	7	per library
SCK	5	Green	13	13	52
MOSI	6	Blue	11	11	51
MISO	7	Violet	12	12	50
IRQ	8	Gray	2 *		per library

NOTE: Pin 8 IRQ is Unused by most software, but the RF24 library has an example that utilizes it. The COLOR is for optional color-coded flat cable [such as THIS](#). We'll add some photos soon showing easiest ways to cable these...